

## 40Z-Meter Truck-Mounted Specifications

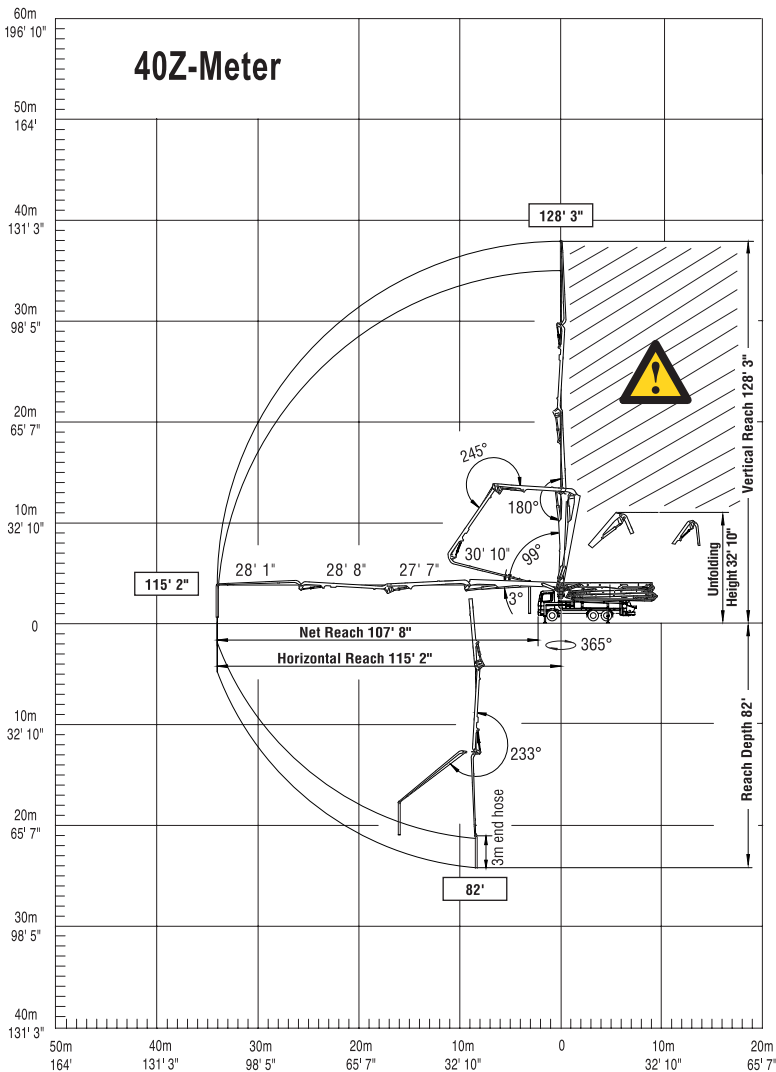
Based on Model MACK MRU 688S with .16H pump cell

Length	39' 10"	(12.15m)
Width	8' 2"	(2.50m)
Height	12' 10"	(3.92m)
Wheelbase	215"	(5,461mm)
Front axle weight	18,679 lbs	(8,473kg)
Rear axle weight	37,071 lbs	(16,815kg)
Approx. total weight	55,750 lbs	(25,288kg)

Weights are approximate and include pump, boom, truck, full hydraulic oil, driver and some fuel. Varies with options selected.

Dimensions will vary with different truck makes, models and specifications.

## Range Diagram



## Boom Specifications • Multi-Z Design

<b>Height &amp; Reach</b>		
Vertical reach	128' 3"	(39.09m)
Horizontal reach	115' 2"	(35.10m)
Reach from front of truck*	107' 8"	(32.82m)
Reach depth	82'	(24.99m)
Unfolding height	32' 10"	(10.01m)

<b>4-Section Boom</b>		
1st section articulation	99°	
2nd section articulation	180°	
3rd section articulation	245°	
4th section articulation	233°	
1st section length	30' 10"	(9.40m)
2nd section length	27' 7"	(8.41m)
3rd section length	28' 8"	(8.74m)
4th section length	28' 1"	(8.56m)

<b>General Specs</b>		
Pipeline size (ID) metric ends	4.6"	(117mm)
Rotation	365°	
End hose — length	10'	(3m)
End hose — diameter (lightweight)	4.5"	(115mm)
Outrigger spread L - R — front	20' 7"	(6.27m)
Outrigger spread L - R — rear	21' 8"	(6.60m)
	hydraulically extend out & down	
	hydraulically swing out & extend down	

<b>Pump Specifications</b>		
<b>40Z.16H</b>		
Output — rod side	210 yd <sup>3</sup> /hr (160m <sup>3</sup> /hr)	
Output — piston side	146 yd <sup>3</sup> /hr (112m <sup>3</sup> /hr)	
Pressure — rod side	1233 psi (85 bar)	
Pressure — piston side	1885 psi (130 bar) -	
Material cylinder diameter	9" (230mm)	
Stroke length	83" (2100mm)	
Max strokes per minute — rod side	31	
Max strokes per minute — piston side	21	
Volume control	0-Full	
Vibrator	Standard	
Hard-chromed material cylinders	Standard	
Hydraulic system	Free Flow	
Hydraulic system pressure	5075 psi (350 bar)	
Differential cylinder diameter	5.5" (140mm)	
Rod diameter	3.1" (80mm)	
Maximum size aggregate	2.5" (63mm)	
Water tank	185 gal (700L)	

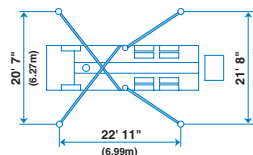
Maximum theoretical values listed.

\* Applies to units mounted on PMA stock truck — MACK MRU 688S

\* Standard delivery line system rated at max line pressure of 1233 psi (85 bar)

End hose not to be operated in caution area.

Photos and drawings are for illustrative purposes only. For available options, please refer to price list.



Authorized Distributor



Putzmeister America, Inc.  
1733 90th Street  
Sturtevant, WI 53177 USA  
Telephone (262) 886-3200  
(800) 884-7210  
Facsimile (262) 884-6338  
www.putzmeister.com

